

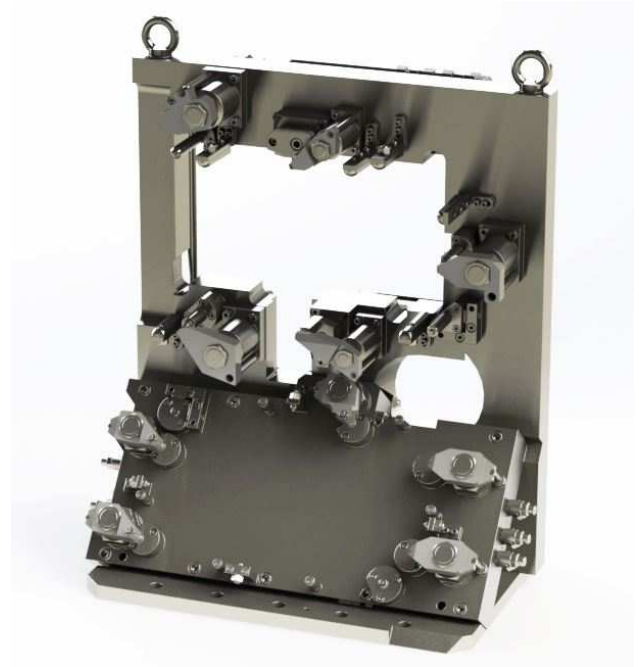
DEVELOPMENT AND DESIGN



In cooperation with partners, research institutions and customers, HSTEC develops innovative products according to customer request and offers creative solutions in the field of industrial automation.

R&D team consists of highly skilled mechanical and electrical engineers with great working experience in development of machine tool components:

- High-speed motorized spindles
- Main drive spindle motors for flexible machining systems
- Special direct drives with built-in, linear or torque motors
- Special machine tools and machining units
- Multi spindle turret heads
- Clamping devices
- Robotic automation



Product design, calculations and analyses are made using AutoCAD, SolidWorks and RobotStudio software packages.

